

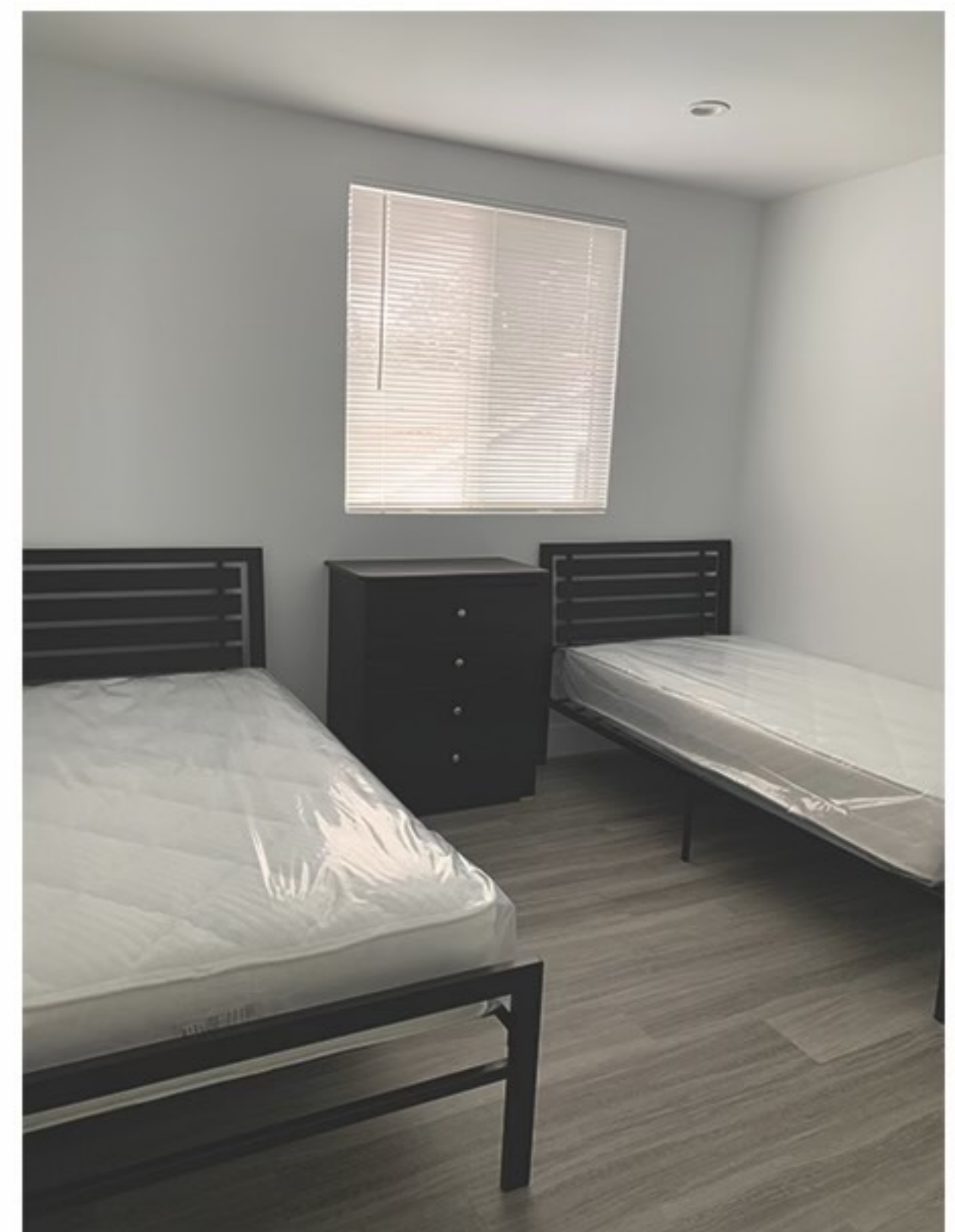
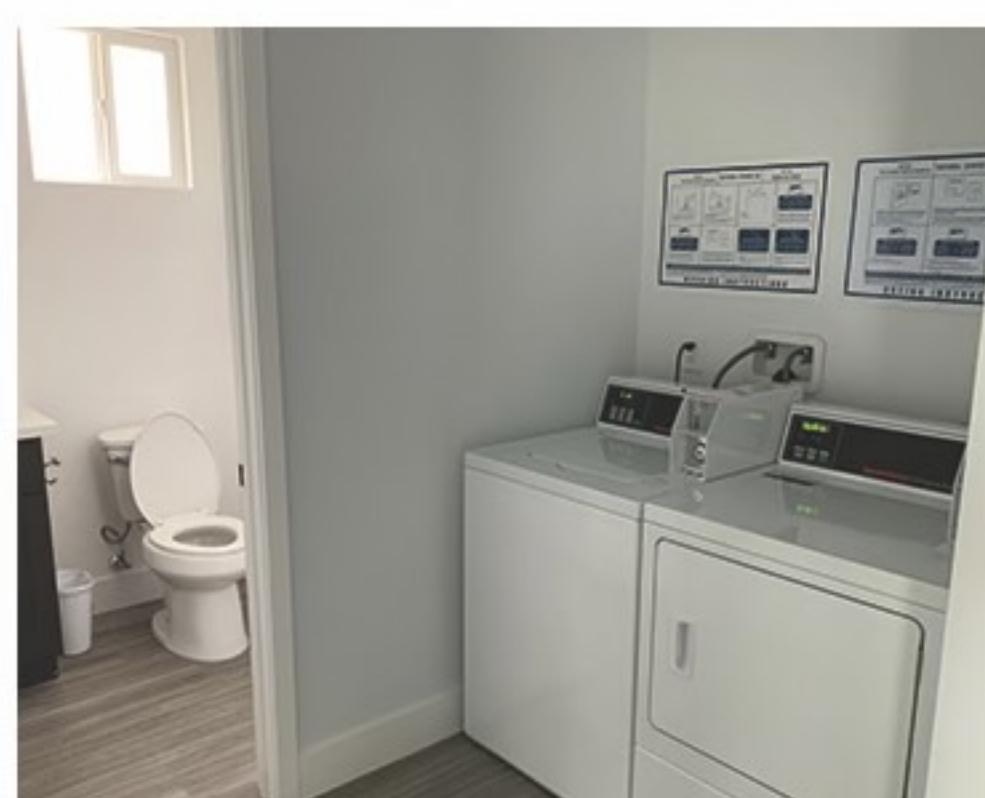


FOR DETAILS PLEASE CALL
(323)914.0730 OR (323)401.5823

MOVE IN TODAY

THE C.H.A.M.P.I.O.N HOUSE
IS NOW OPEN.

THIS BEAUTIFUL 10 BEDROOM
6 BATHROOM DUPLEX IS LOCATED
IN SOUTH LOS ANGELES.



• NO CREDIT CHECK • NO DEPOSIT • SSI/ SSDI ACCEPTED • GR HOUSING
SUBSIDY PROGRAM ACCEPTED • AFFORDABLE MONTHLY RENT • WIFI •
CABLE • CASE MANAGEMENT • MEN ONLY!