



SAGE PARK

Affordable 1, 2, & 3 Bedroom Apartments

NOW ACCEPTING APPLICATIONS FOR ADA UNITS ONLY!

APPLY TODAY!

We are now accepting applications for only (1) two-bedroom **Mobility Accessible** unit.

We will also be accepting up to **200** applications for our Accessible Mobility Waitlist. (Applications must be mailed in between **9/24/18 to 10/12/18**.)

Income and other restrictions apply. Affordable rents are restricted in accordance with the Low-Income Housing Tax Credit (LIHTC) program and other Regulatory Agreements.

Apartment Amenities:

- Kitchens with dishwashers
- Refrigerators included
- Balconies (some units)

Community Amenities:

- Event Center
- Fitness room
- Community garden
- Laundry facilities
- On-site management

If you are unable to obtain an application due to disability, you may request one by mail by calling (424) 286-1231.



Applications may be picked up at the Leasing Office located at 1310 W. 177th St., Los Angeles, CA 90248

For up to date information, call (424) 286-1231.

All applications must be mailed in. See application for instructions.

1 Bedroom				1 Person Max.	2 Persons Max.	3 Persons Max.
No. of Units	Unit Type	Tenant Rent	Min. Income*	Income	Income	Income
2	30%	545	13,784	20,370	23,280	26,190
6	40%	727	18,714	27,160	31,040	34,920
12	50%	909	23,676	33,950	38,800	43,650
9	60%	1091	28,638	40,740	46,560	52,380

2 Bedroom				2 Persons Max.	3 Persons Max.	4 Persons Max.	5 Persons Max.
No. of Units	Unit Type	Tenant Rent	Min. Income*	Income	Income	Income	Income
4	30%	654	16,452	23,280	26,190	29,070	31,410
6	40%	873	22,476	31,040	34,920	38,760	41,880
12	50%	1091	28,411	38,800	43,650	48,450	52,350
9	60%	1,309	34,378	46,560	52,380	58,140	62,820

3 Bedroom				3 Persons Max.	4 Persons Max.	5 Persons Max.	6 Persons Max.	7 Persons Max.
No. of Units	Unit Type	Tenant Rent	Min. Income*	Income	Income	Income	Income	Income
3	30%	756	19,005	26,190	29,070	31,410	33,750	36,060
6	40%	1,008	25,881	34,920	38,760	41,880	45,000	48,080
12	50%	1,260	32,757	43,650	48,450	52,350	56,250	60,100
9	60%	1,512	39,632	52,380	58,140	62,820	67,500	72,120

*There is no minimum income requirement for applicants with a Section 8 Voucher. Rents & income limits are subject to change without notice.

Mobility/Hearing/Sight impaired households will have priority for four (4) units designed for the mobility impaired and two (2) units designed for the hearing/sight impaired.



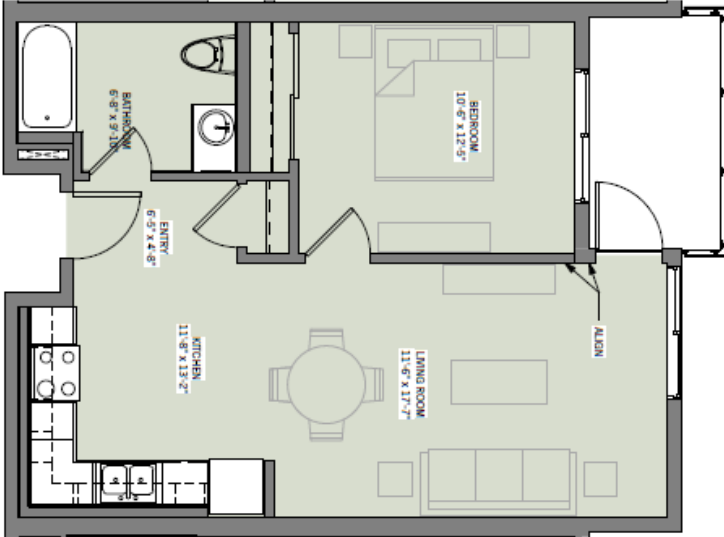
All Applications must be received by **Friday, October 12th, 2018**. *All applications will be placed on the Waitlist as they are received. All applicants must meet certain underwriting guidelines. This project is subject to the requirements of several funding sources, which have made it feasible. The above information reflects these requirements to the best of management knowledge but is subject to change if required for compliance with law or regulation.





Sage Park Apartments Floor Plans

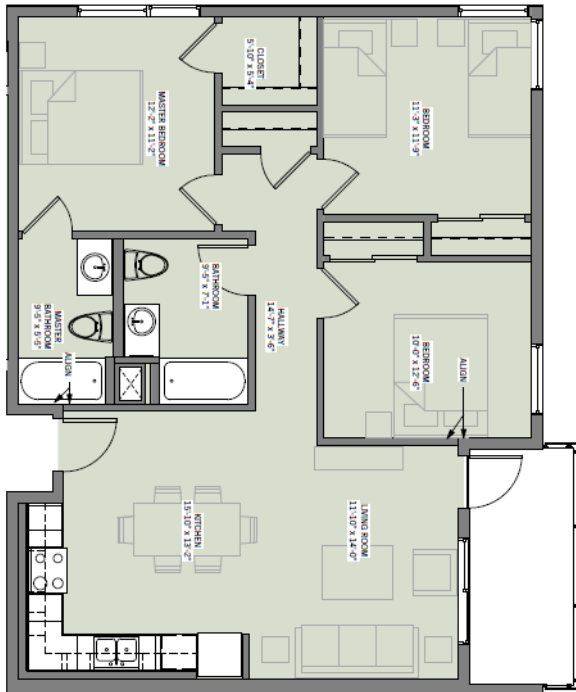
1 Bedroom Floor Plan – 590 Square Feet



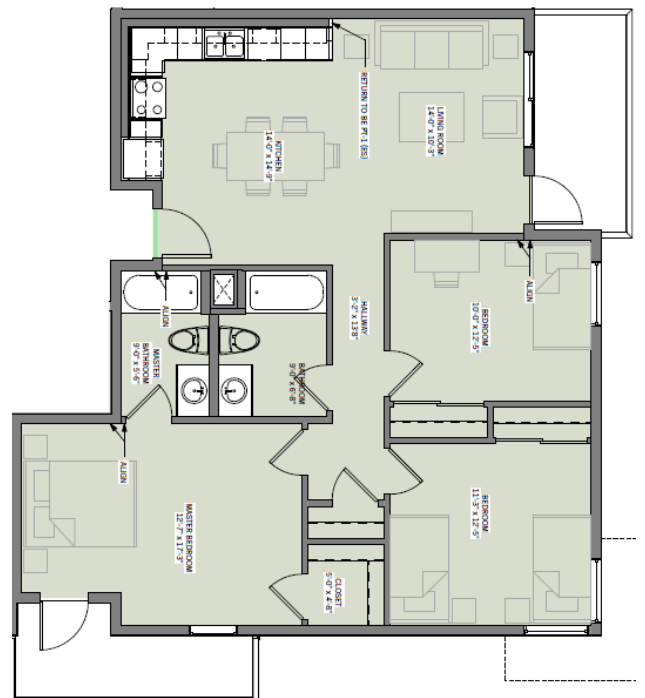
2 Bedroom Floor Plan – 900 Square Feet



3 Bedroom Floor Plan (Type A) – 1020 Square Feet



3 Bedroom Floor Plan (Type B) – 1080 Sq. Ft.



EQUAL HOUSING OPPORTUNITY

Telephone Device for the Deaf: (888) 877-5379 or California Relay Service (711)

