

# CLOVERFIELD SERVICES



**Location:**  
1751 Cloverfield Blvd.  
Santa Monica, CA 90404  
**Phone:**  
310.883.1222  
**Fax:** 310.883.1223

Because everyone should be housed, healthy and safe.

## Safe Haven / Daybreak

Cloverfield Services Center is a project of The People Concern. The project was developed to increase access to housing for men and women experiencing homelessness and living with disabilities, such as mental illness, addiction and/or physical illness.

The transition to self-sufficiency begins with a highly supportive environment where individuals can feel physically and emotionally safe. The Project focuses on improving quality of life, building trust and meeting the client at their individualized level of need.



Daybreak Meditation Garden/Patio

For many, both programs serve as a point of entry to the service systems by providing access to basic services such as food, clothing, showers, restrooms, life skills groups, a sense of community and access to permanent supportive housing.

Utilizing a harm reduction approach, Cloverfield Services Center does not require participation in services (besides Housing case management if staying as a resident) but rather encourage individuals to accept services at their own pace.

**Cloverfield Services Center**  
Provides 2 Programs:

**INREACH DAY PROGRAM**  
Services Provided...

- \*Meals
- \*Showers (last sign up @ 4:30PM)
- \*Laundry (last sign up @ 4:30PM)
- \*Case Management
- \*Life Skills Group

**INTERIM HOUSING PROGRAM**  
(32 female beds and 13 male beds)

- \*Proof of Income, I.D. Verification

Social Security Card, Homeless Verification and TB test are required for intake.

Hours: Monday – Friday 9AM-5PM



**THEPEOPLECONCERN**  
Because everyone should be housed, healthy and safe.  
CSCC & LAMP COMMUNITY UNITED



THE **PEOPLE** CONCERN

## Inreach Program Field Based Mental Health

Case Managers provide mental health outreach services and linkage to day services within the Cloverfield service center.

Program services include:

- \* Onsite case management
- \* Mental health screenings and referral/linkage to appropriate support based on level of need
  - \* Day Services available 9 am- 6 pm (excluding weekends)
    - Meals (breakfast, lunch, dinner)
    - Showers (last sign up 4:30 pm)
    - Laundry (last sign up 4:30 pm)
    - Money Management
    - Daily groups (subject to change)

Cloverfield Services Center

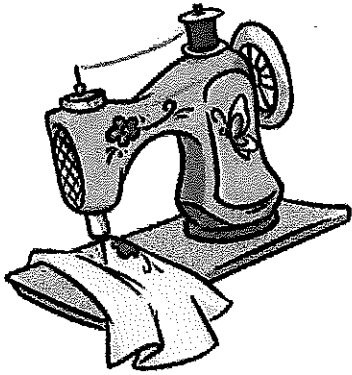
1751 Cloverfield Blvd

Santa Monica, CA 90404

Phone: 310-883-1222

Fax: 310-883-1223

---



**SEWING,**

**QUILTING**

**&**

**DOLL MAKING**

**Mondays (Room 246)**

**10:00 PM to NOON**

**Thursdays**



**DRUM CIRCLE**

**Fridays on the Patio**

**10:15 A.M. TO 11:15 A.M.**



**THE PEOPLE CONCERN**

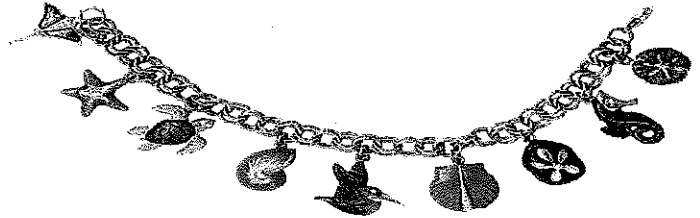
Because everyone should be housed, healthy and safe.  
OPCC & LAMP COMMUNITY UNITED

# ARTS PROGRAM

**1751 Cloverfield, 2nd Floor**

**Drop by for classes and studio times.**

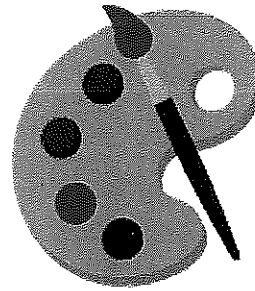
**Create, Relax, Enjoy!**



**JEWELRY and CRAFTS**

**TUESDAYS (2ND FLOOR)**

**1:00 P.M. TO 3:00 P.M.**



# OPEN ARTS STUDIO

**Mondays & Tuesdays**

**Thursday & Fridays**

**1:00 P.M. to 4:30P.M.**

## ARTS PROGRAM

THE PEOPLE CONCERN | OPCC

LAMP COMMUNITY UNITED

310) 883-1220 X 106