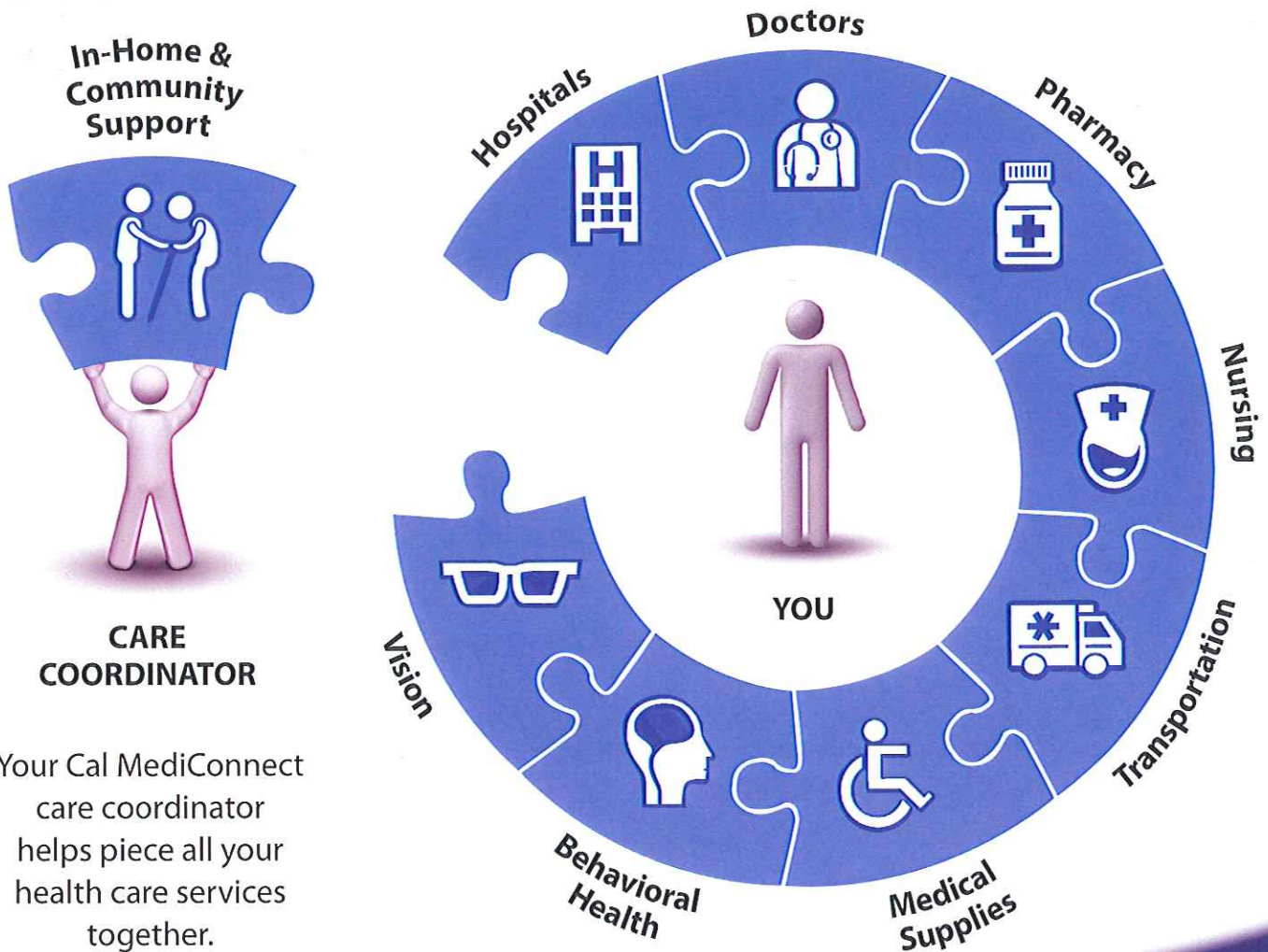


CalMediConnect Benefits

Cal MediConnect combines all your Medicare and Medi-Cal benefits into a single health plan.

This health plan option can help you get the care you need. For example, they can help you set up doctor's appointments, connect you to dental services, and make sure you have transportation. The plan will help your doctors work together as a team to meet your health needs.

Cal MediConnect health plans also give you extra benefits at no additional cost, such as vision and care coordination.



Your Cal MediConnect care coordinator helps piece all your health care services together.

Cal MediConnect Health Plans



Anthem Blue Cross Cal MediConnect

1-888-350-3447

TTY: 711

<https://lacountyduals.anthem.com/member-resources.html>



Health Net Cal MediConnect

1-888-788-5395

TTY: 711

www.healthnet.com/calmediconnect



Molina Dual Options

1-855-665-4627

TTY: 711

www.molinahealthcare.com/duals



Blue Shield of California Promise Health Plan

1-855-905-3825

TTY: 711

www.blueshieldca.com/promise/calmediconnect



L.A. Care Cal MediConnect

1-888-522-1298

TTY: 711

www.calmediconnectla.org

State Outreach Staff



To ask questions or schedule a presentation, please contact:

Sandra Yujung Choi (+ Spanish, Korean) - 213-446-7169 | sandra@harbageconsulting.com

Paul Gutierrez - 213-393-2465 | paul@harbageconsulting.com

Fred Munoz (+ Spanish) - 323-630-4464 | fred@harbageconsulting.com

Additional Resources



CalDuals.org

info@calduals.org

www.calduals.org

For free, unbiased counseling to help you make a decision:

Health Insurance Counseling & Advocacy Program

1-909-256-8369

To enroll in a plan:

Health Care Options

1-844-580-7272

If you have a problem with your Cal MediConnect plan:

Cal MediConnect Ombudsman

1-855-501-3077